



# BURLINGTON



Burlington, a small Vermont town of 43,000 people on the shores of Lake Champlain against a backdrop of the Adirondack Mountains, has a lot to offer! Renowned for its warm atmosphere, good restaurants and craft breweries, it features a great mix of sports, cultural and gourmet activities.

CHURCH STREET MARKETPLACE AT NIGHT

## WHAT TO DO

### BURLINGTON GREENWAY BIKE PATH ★

The Greenway is a crown jewel of the town! This **13-kilometre paved trail** offers magnificent views of Lake Champlain and the surrounding mountains and is immensely popular with walkers, runners and cyclists. The Burlington Greenway Bike Path is part of the 22-kilometre-long **Island Line Rail Trail**. Bicycles can be rented at **Local Motion** (1, Steele Street, Burlington / 802-861-2700 / [www.localmotion.org](http://www.localmotion.org)).

[ENJOYBURLINGTON.COM/PLACE/BURLINGTON-GREENWAY/](http://ENJOYBURLINGTON.COM/PLACE/BURLINGTON-GREENWAY/)

### CHURCH STREET MARKETPLACE ★

You can't visit Burlington without doing some window shopping on **Church Street**. This four-block **pedestrian mall** features **many restaurants and stores**. It is extremely lively during the summer and is the site of a number of festivals and activities.

**CHURCH STREET, BURLINGTON**  
[WWW.CHURCHSTMARKETPLACE.COM](http://WWW.CHURCHSTMARKETPLACE.COM)

### FARMER'S MARKET ★

Very popular with residents and visitors alike, this **outdoor market is one of the most beautiful in Vermont**. You will find **more than 90 booths** offering local products: seasonal fruits and vegetables, flowers, prepared foods, crafts and much more. A winter market is also held some Saturdays during the holidays.

**345, PINE STREET, BURLINGTON**  
[WWW.BURLINGTONFARMERSMARKET.ORG](http://WWW.BURLINGTONFARMERSMARKET.ORG)

### LAKE CHAMPLAIN CRUISE ★

Many companies offer cruises on the lake. The **Spirit of Ethan Allen** (802-862-8300 / [soea.com](http://soea.com)) is a **large cruise ship** on which you can enjoy a variety of excursions including dinner cruises and sunset cruises. If you want a **more classic experience**, without the engines, the **Whistling Man Schooner Company** (802-825-7245 / [www.whistlingman.com](http://www.whistlingman.com)) also offers 2-hour tours aboard their large sailboat. Departures daily in the summer season from the marina. Reservations required.

**BURLINGTON BOATHOUSE:**  
**1, COLLEGE STREET, BURLINGTON**  
[ENJOYBURLINGTON.COM/CHARTER-BOATS-CRUISES/](http://ENJOYBURLINGTON.COM/CHARTER-BOATS-CRUISES/)



BURLINGTON GREENWAY BIKE TRAIL

© CreativeCommons, Richard



CHURCH STREET MARKETPLACE

© WikCommons, Own Work



THE SPIRIT OF ETHAN ALLEN

© AdobeStock, Byron



FARMER'S MARKET

© AdobeStock, WaverbreakMediaMicro



## SHELBURNE FARM★

Shelburne Farms is a National Historic Landmark and beautiful **570-hectare working farm** on the shores of Lake Champlain. **Created in 1886**, today the farm is a **non-profit education center for sustainability** and includes a cheesemaker, a dairy, a snack bar with farm products, a children's farmyard, a gift shop, and 16 km of walking trails offering magnificent views of the farm and the region. The visitor centre and gift shop are usually open year-round, and the entire centre is open from May to October. Visit the website.

1611, HARBOR ROAD, SHELBURNE  
802-985-8686  
WWW.SHELBURNEFARMS.ORG

## SHELBURNE MUSEUM★★

A visit to the Shelburne Museum is an unconventional experience that will add some art, beauty, history and culture to your day. The **many collections** are spread over

**39 buildings on 45 hectares** of beautifully landscaped grounds. You will discover **collections of decorative and popular art, circus art, textiles, toys, and much more.** From French impressionism to American ingenuity, this museum will delight visitors of all ages. Some buildings are closed in off season.

6000, SHELBURNE ROAD,  
SHELBURNE  
802-985-3346  
WWW.SHELBURNEMUSEUM.ORG

## BURLINGTON BREW TOURS

Vermont is **renowned for its craft breweries**, and **Burlington Brew Tours** is a great way to discover them without having to drive, in the company of experienced beer experts! For example, if you opt for the 4-hour **Classic Brew Tour**, you will sample more than **16 different beers from 4 local craft breweries.** Reservations required.  
802-760-6091  
CITYBREWTOURS.COM/BURLINGTON



AERIAL VIEW OF SHELBURNE FARM

© Shelburne Farms, Oran Moore



SHELBURNE FARM AT SUNRISE

© Shelburne Farms, Marshall Webb



SUNSET ON LAKE CHAMPLAIN

© AdobeStock, zakzeinert



SUNSET ON BURLINGTON HARBOUR

© AdobeStock, Nicholas Krotki



Microbrewery

★ Noteworthy

★★ Worth the detour

★★★ Must see

## NEARBY

As you head towards Burlington, be sure to take beautiful **Route 302 through Crawford Notch**, which offers spectacular scenery.

### SMUGGLER'S NOTCH STATE PARK ★★

Near the charming village of **Stowe ★** is the famous **Smugglers' Notch ★★**, a narrow pass through the **Green Mountains**. Smugglers' Notch derives its name from illegal trade between Vermont and Montreal under President Thomas Jefferson, who passed an embargo act forbidding American trade with Great Britain and Canada. Many local people continued herding cattle and carrying other goods through the Notch. Today Smugglers' Notch is a busy state park and a popular destination for visitors. It offers good opportunities for hiking at all levels, including the challenging **Hellbrook Trail** and the popular **Sterling Pond Trail**. You can also **explore the caves** in the park. Go to **Barnes Camp Visitor Center** for more information. Open every day

from mid-May to mid-October. **6443, MOUNTAIN ROAD, STOWE**  
**802-253-4014**  
**WWW.VTSTATEPARKS.COM/SMUGGLERS.HTML**

### MONT MANSFIELD ★★

**Mount Mansfield ★★** in **Stowe ★** is the highest mountain in Vermont and the most visited in the region. Its summit ("The Chin") is located at **1,339 meters** above sea level. When viewed from the east or west, this mountain has the appearance of a (quite elongated) human profile, with distinct forehead, nose, lips, chin, and Adam's apple. The summit offers **postcard-worthy landscapes and an awe-inspiring 360-degree panoramic view**.

To get to the top, you can take the spectacular **Mount Mansfield Auto Toll Road ★★**, a steep and winding 7-km-long unpaved road. It will take you about 20 minutes to reach the "Chin". **Note that there is a toll to use the road, and RVs are not permitted.**

You can also ride to the top in the **Gondola SkyRide ★★** (at Stowe Mountain Resort, 7416 Mountain Road, Stowe). Open every day from late June until mid-October.

And if you're looking for a physical challenge, several trails also lead to the summit, including the famous **Sunset Ridge Trail**, which many believe is the most beautiful the mountain has to offer.  
**MOUNTAIN ROAD, STOWE**

### GREEN MOUNTAINS NATIONAL FOREST

Between Burlington and New Heaven lies the Green Mountains National Forest. The Green Mountains are part of the **Appalachian mountain chain**, like all mountains in eastern North America. They are also the origin of the name of the State of Vermont (French explorer Samuel de Champlain named them *verd mont* on his map, meaning green mountain). The national forest covers **160,000 hectares**, is characterized by rugged mountains and wild forest, and offers few

amenities. You will have the impression you are venturing into unexplored territory! Immerse yourself in this pristine natural environment, breathing deeply of the scent of spruce, pine and larch. There are many hiking trails, including part of the **Long Trail** or the **Appalachian Trail**, which wind through the heart of the forest. An experience unlike any other! The Green Mountains National Forest is divided into 2 regions: **The Rochester-Middlebury District** to the north and **The Manchester Ranger District** to the south.

**THE ROCHESTER-MIDDLEBURY DISTRICT : 99, RANGER ROAD, ROCHESTER**  
**802-767-4261**

**THE MANCHESTER RANGER DISTRICT : 2538, DEPOT STREET, MANCHESTER**  
**802-362-2307**  
**WWW.FS.USDA.GOV/GMFL**



© Shutterstock, 1127851574 - Montana Isabella



## WHERE TO EAT

### BEN & JERRY'S (\$)

If it's warm, you'll want to go for a good ice cream at Ben & Jerry's, Vermont's iconic ice cream shop. You'll find a wide variety of original flavors with creative names that are sure to put a smile on your face.

36, CHURCH STREET, BURLINGTON  
802-862-9620

[WWW.BENJERRY.COM/BURLINGTON](http://WWW.BENJERRY.COM/BURLINGTON)

### LEUNIG'S BISTRO (\$\$-\$\$\$)

This French bistro & bar is a Burlington institution, offering the "Panache of Paris and the Value of Vermont." It's the perfect place to enjoy a "steak frites" with a good beer! Local bands also perform some evenings.

115, CHURCH STREET, BURLINGTON  
802-863-3759

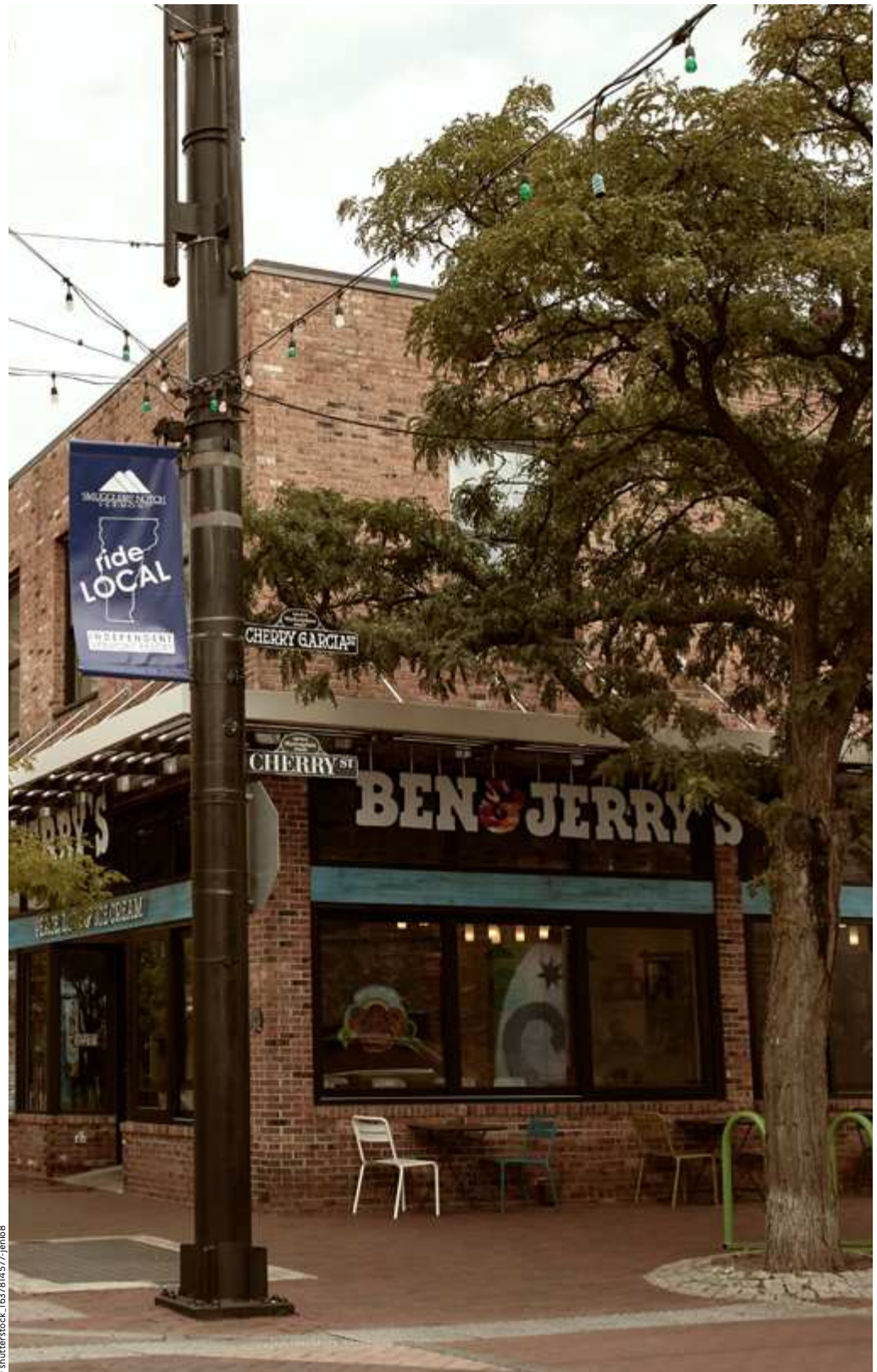
[WWW.LEUNIGSBISTRO.COM](http://WWW.LEUNIGSBISTRO.COM)

### HEN OF THE WOOD (\$\$\$\$)

This American-style restaurant offers a true Vermont culinary experience with an emphasis on local ingredients. The atmosphere is warm and welcoming and the menu offers simple, delicious and well-presented dishes that vary with the seasons. The fresh and flavourful oysters are particularly popular.

55, CHERRY STREET, BURLINGTON  
802-540-0534

[WWW.HENOFTHWOOD.COM](http://WWW.HENOFTHWOOD.COM)



© shutterstock\_1637814577-jenlo8



